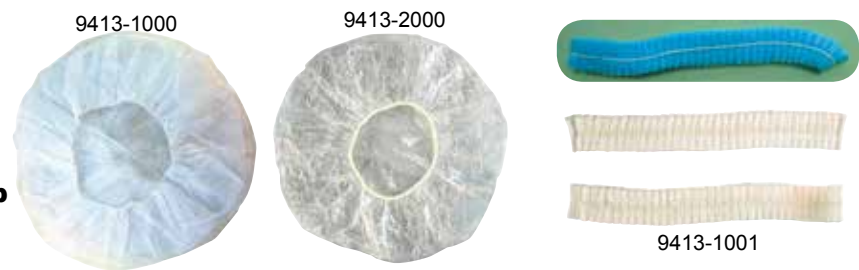


1.3.1-1.3.2 PPE/Body protection/Disposable working garments-Apron



Sleeves

Item	Material	Thickness	Color	Size	Regular packing
9315A	PE, disposable.	0.02mm.	White, blue.	40*18cm.	10pcs/roll, 100pcs/PE bag, 5000pcs/ctn.
9315	PP non-woven, disposable.	30g/m ² .	White, green, blue.	40*18cm.	100pcs/PE bag, 1000pcs/ctn.
9315B	PPP.	0.3mm.	Yellow, green, blue.	42*20cm.	12pairs/PE bag, 120 pairs/ctn.
9315C	Soft PVC.	0.3mm.	Blue, green, white, red, clear.	42*20cm.	12pairs/PE bag, 240 pairs/ctn.



PP bouffant cap

*Disposable.
*Sold on pc.

Item	Material	Thickness	Color	Size	Regular packing
9413-1000	Bouffant cap.	PP non-woven cloth.	14g/m ² .	White, green, blue.	Φ40cm 100pcs/PE bag, 2000pcs/ctn.
9413-1001	Mob-cap.	PP non-woven cloth.	14g/m ² .	White, green, blue.	Φ40cm 100pcs/PE bag, 1000pcs/ctn.
9413-2000	Bath cap.	PE disposable.	0.02mm.	White, blue.	Φ32cm 10pcs/roll, 100pcs/PE bag, 2000pcs/ctn.

Please specify size.

Water-proof PP coverall



*Material: Non-woven, polyethylene coating spun-bonded polypropylene fibers (PP+PE). Available in breathable treated, and anti-static treated.
*Weight: Available in 43g/m², 56g/m², 63g/m², 80g/m².
*Coverall: Hood, elastic waist, elastic wrist & pantalets, zipper front cover, bootsless is regular style.
*Color: White is regular, available in blue, green, rose.
*Size: S-XXXL.
*Ideal for protection against passage or entrapment of harmful dry particulates.

Item	Material	Color	Breath	Static-resistance	Size
9326-2000	PP+PE		Un-breathable.		Bootsless.
9326-2001	PP+PE		Un-breathable.		With boots.
9326-3000	PP+PE		Breathable.		Bootsless.
9326-3001	PP+PE		Breathable.		With boots.
9326-3100	PP+PE		Breathable.	Anit-static.	Bootsless.
9326-3101	PP+PE		Breathable.	Anit-static.	With boots.
9326-1100	SMS		Breathable.	Anit-static.	Bootsless.
9326-1101	SMS		Breathable.	Anit-static.	With boots.
9326-4000	SPES.		Breathable.		Bootsless.
9326-4001	SPES.		Breathable.		With boots.
9326-5100	Tyvek.	White color only.	Breathable.	Anit-static.	Bootsless.
9326-5101	Tyvek.		Breathable.	Anit-static.	With boots.

Please specify weight, size and color.

Economy PP coveralls

*Material: Low cost PP non-woven cloth.
*Weight: Available in 40g/m², 50g/m², 60g/m², 70g/m², 80g/m².
*Coverall: Hood, elastic waist, elastic wrist & pantalets, zipper front cover, bootsless is regular style.
*Color: White is regular, available in blue, green.
*Size: S-XXXL.
*Ideal for non-hazardous, grimy area.



Leather apron

*Material: Genuine leather, patched.
*Size: 24**36*, 24**40".
9311
Please specify size.



9326-1000	Bootsless.
9326-1001	With boots.

Please specify size, weight, & color.

9326-1000

1.3.2-1.3.3 PPE/Body protection/Apron-High version



Working apron

Item	Material	Thickness	Color	Size	Regular packing
9321	PPP.	0.3mm.	Yellow, white, black.	90*120cm.	1pcs/PEbag, 50pcs/ctn.
9321-1000	PVC.	0.3mm.	Yellow, white, blue, green.	80*110cm.	1pcs/PEbag, 50pcs/ctn.
9322-1000	PE, disposable.	0.02mm.	White, blue.	70*110cm.	100pcs/PE bag, 1000pcs/ctn.
9322-2000	PP, disposable.	30g/m ² .	White, green, blue.	90*110cm.	100pcs/PE bag, 1000pcs/ctn.

High-vision warning safety vest

*Fluorescent background material, available color: Yellow, orange, green, blue.

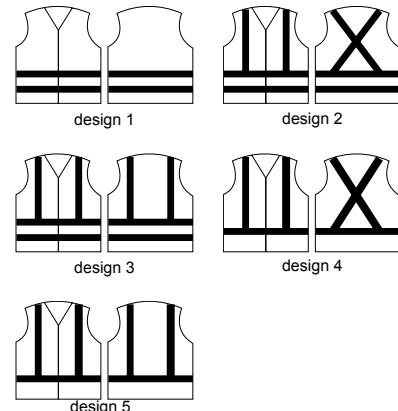
*Retroreflective warning belt, available color: white, yellow.

*Front velcro closures.

*Size: S-XXXL.

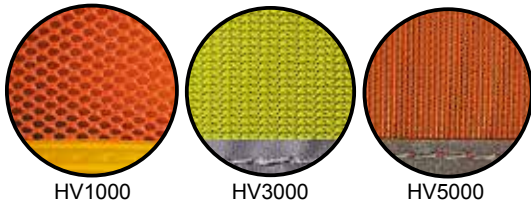


Item	Back ground structure	Warning belt	Design	CE
9345-3000	HV3000	Without		
9345-5000	HV5000	Without		
9345-3101	HV3000	RB100	Design 1	CE class 22
9345-3102	HV3000	RB100	Design 2	CE class 22
9345-3103	HV3000	RB100	Design 3	CE class 22
9345-3104	HV3000	RB100	Design 4	CE class 22
9345-3105	HV3000	RB100	Design 5	CE class 22
9345-4101	HV4000	RB100	Design 1	
9345-4102	HV4000	RB100	Design 2	
9345-4103	HV4000	RB100	Design 3	
9345-4104	HV4000	RB100	Design 4	
9345-4105	HV4000	RB100	Design 5	
9345-3201	HV3000	RB200	Design 1	
9345-3202	HV3000	RB200	Design 2	
9345-3203	HV3000	RB200	Design 3	
9345-3204	HV3000	RB200	Design 4	
9345-3205	HV3000	RB200	Design 5	
9345-4201	HV4000	RB200	Design 1	
9345-4202	HV4000	RB200	Design 2	
9345-4203	HV4000	RB200	Design 3	
9345-4204	HV4000	RB200	Design 4	
9345-4205	HV4000	RB200	Design 5	
9345-5101	HV5000	RB100	Design 1	
9345-6101	HV6000	RB100	Design 1	
9345-5201	HV5000	RB200	Design 1	
9345-6201	HV6000	RB200	Design 1	



9345-3101OE

Please specify color of background and belt.



High-vision fluorescent background material

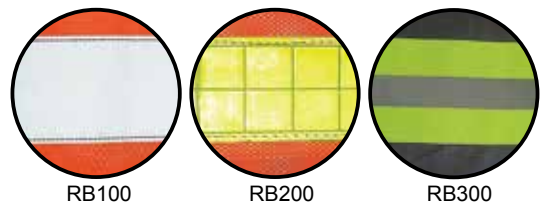
*Fluorescent background material.

*Available fluorescent warning color: Yellow, orange, green, blue.

*CE approved, in comply with EN471.

Item	Back ground structure	Weight of fabric
HV1000	Hard polyester mesh.	> 120g/m ²
HV2000	Hard polyester mesh.	< 80g/m ²
HV3000	Tricot polyester.	> 120g/m ²
HV4000	Tricot polyester.	< 80g/m ²
HV5000	Polyester knit cloth.	> 120g/m ²
HV6000	Polyester knit cloth.	< 80g/m ²

Please specify color.



Reflective warning belt

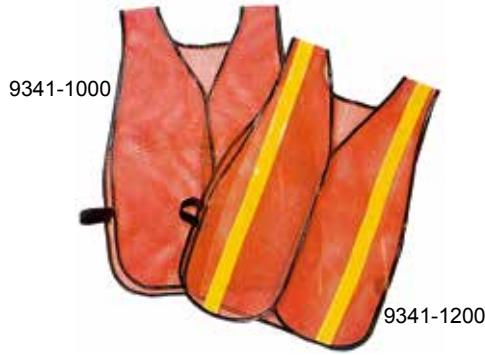
RB100 Cotton/polyester cloth with retroreflective warning coating, silver color only, CE certified, in comply with EN471, class 2.

RB200 Retroreflective crystal warning belt, available color: white, yellow.

RB300 Fluorescent polyester knit belt with retroreflective warning coating, available color: white, yellow.

Please specify color.

1.3.3-1.3.5 PPE/Body protection/High version-Tools belt-Safety belt



General purpose safety vest

- *Fluorescent background material, available color: yellow, orange, green, blue.
- *Retroreflective crystal warning belt, available color: white, yellow.
- *Front velcro closures, elastic side strap.
- *Size: S-XXXL.

Item	Back ground structure	Warning belt
9341-1000	HV1000	Without
9341-5000	HV5000	Without
9341-1200	HV1000	RB200
9341-5200	HV5000	RB200

Please specify color of background and belt.



Waist supporter

Material: Nylon.
Size: S-3XL..

9422
Please specify color.



Warning safety arm belt

- *Retroreflective crystal warning belt, available color: white, yellow, orange.
- *Flash caution led lights, lithium button battery powered.

9341-8000
9341-8001 Without lights.
Please specify color.



Self-lock warning safety arm belt

- *Retroreflective crystal warning belt, available color: white, yellow, orange.
- *Self-lock structure.

9341-8100
Please specify color.



9606



9604

Leather tools bag.

- *Genuine leather.
- 9604 2 bags,9 pockets,3 holders.
- 9606 4 bags,5 pockets,3 holders.



Single waist safety belt

- *Belt in nylon material, bag in PVC coated nylon cloth.
- *Working length of cable: 1.5m.
- *Packing: Wach set inside a box.

9421



Sealed self-retracting lifeline

- *Self-retracting fall arresters, anti free-fall.
- *Cable in nylon, length: 1.5m.
- *Spring tensioned cable: Steel, length: 3m, 5m, 7m, 10m, 15m, 20m, 30m, 45m.

9441
Please specify length of spring tensioned cable.



Full body safety belt

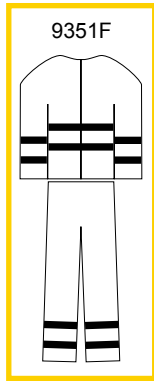
- *Belt in nylon material.
- *Working length of cable: 1.5m.
- *Packing: Each set inside a box.

9411
9411A PE hip pad, side D-ring.

1.3.6 PPE/Body protection/Rainwear



9351A



Rain siut

*Material: 3-ply structure: PVC/polyester/PVC, available thickness: economy 0.28-0.30mm, standard 0.32-0.35mm, heavy >0.4mm.
 *Jacket: Ventilated cap back, inner elastic wrist & zipper front cover ensures warm, with hood.
 *Pants with elastic waist.
 *Ultrasonic welded water-proof seam.
 *Available color: Yellow, green, blue.
9351 PVC/polyester 2-ply cloth(PP).
9351A PVC/polyester/PVC 3-ply cloth(PPP).
9351F PPP, with reflective warning belt.
 Please specify color and thickness.



9352A



zipper front cover

BIB rain suit

*Material: 3-ply structure: PVC/polyester/PVC, available thickness: economy 0.28-0.30mm, standard 0.32-0.35mm, heavy >0.4mm.
 *Jacket: Ventilated cap back, inner elastic wrist & zipper front cover ensures warm, with hood.
 *BIB pants.
 *Ultrasonic welded water-proof seam.
 *Available color: Yellow, green, blue.
9352 PVC/polyester 2-ply cloth(PP).
9352A PVC/polyester/PVC 3-ply cloth(PPP).
9352F PPP, with reflective warning belt.
 Please specify color and thickness.



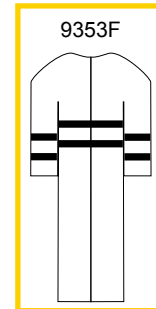
inner elastic wrist



ventilated cap back

Rain coat

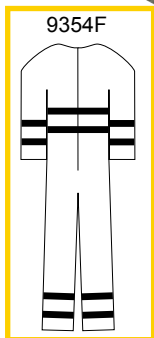
*Material: 3-ply structure: PVC/polyester/PVC, available thickness: economy 0.28-0.30mm, standard 0.32-0.35mm, heavy >0.4mm.
 *Coat: Ventilated cap back, inner elastic wrist & zipper front ensures warm, with hood.
 *Ultrasonic welded water-proof seam.
 *Available color: Yellow, green, blue.
9353 PVC/polyester 2-ply cloth(PP).
9353A PVC/polyester/PVC 3-ply cloth(PPP).
9353F PPP, with reflective warning belt.
 Please specify color and thickness.



9353F



9354A



9354F

Rain coverall

*Material: 3-ply structure: PVC/polyester/PVC, available thickness: economy 0.28-0.30mm, standard 0.32-0.35mm, heavy >0.4mm.
 *Coat: Ventilated cap back, inner elastic wrist & zipper front ensures warm, with hood.
 *Ultrasonic welded water-proof seam.
 *Available color: Yellow, green, blue.
9354 PVC/polyester 2-ply cloth(PP).
9354A PVC/polyester/PVC 3-ply cloth(PPP).
9354F PPP, with reflective warning belt.
 please specify color.



9353A

1.3.6-1.3.7 PPE/Body protection/Rainwear-Working garments



rain-proof visor

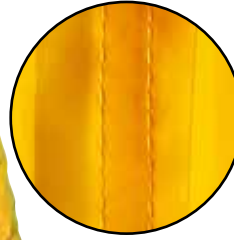


9381

9384



sealed sewing seam



ventilated cap back

Polyester/PVC rain suits

*PVC coated polyester cloth, available thickness: 170T, 190T.
 *Jacket: Ventilated cap back, waist fasten belt & inner elastic wrist ensures warm, folding hood with transparent rain-proof visor.
 *Pants with elastic waist.
 *Water-proof sealed sewing seam.
 *Available color: Green, blue, yellow.
9381 2-pcs rain suits.
9383 Rain coat.
9384 Coverall.
 Please specify color and thickness.



9356

PVC poncho

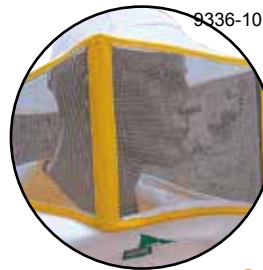
*Materials: Available in PPP, PVC, or PVC coated polyester .
 *Available color: Yellow, green, blue, clear.
9356 PPP.
9386 PVC coated polyester.
9336-100 PVC.



9350

PVC rain suit

*100% PVC cloth, thickness: 0.20mm.
 *Jacket with hood.
 *Pants with elastic waist.
 *Ultrasonic welded water-proof seam.
 *Thickness: 0.20mm.
 *Available color: Yellow, green, blue.
9350



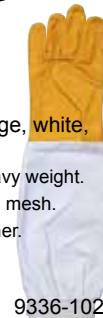
9336-101



9336-100

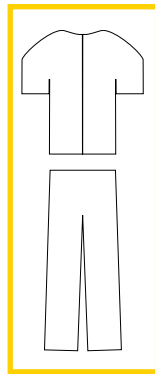
Bee-keeper sets

*Cotton in heavy weight.
 *Available color: Yellow, orange, white, blue, green.
9336-100 Coverall, cotton, heavy weight.
9336-101 Mask, Stainless steel mesh.
9336-102 Glove, genuine leather.



9336-102

1.3.7 PPE/Body protection/Working garments

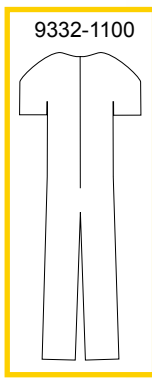


Working suit

*Cotton/polyester cloth.
 *Available weight: Heavy >220g/m², economy light weight <180g/m².
 *Available color: White(WT), red(RD), blue(BE), sky(SY), green(GN), yellow(YW), orange(OE).

Item	Name	Weight of fabric	Sleeves	High vision belt	Sold on
9335-1000	Suit.	> 220g/m ²		Without.	Set.
9335-1001	Jacket.	> 220g/m ²		Without.	PC.
9335-1002	Trousers.	> 220g/m ²		Without.	PC.
9335-2000	Suit.	< 180g/m ²		Without.	Set.
9335-2001	Jacket.	< 180g/m ²		Without.	PC.
9335-2002	Trousers.	< 180g/m ²		Without.	PC.
9335F-1000	Suit.	> 220g/m ²		With.	Set.
9335-1100	Suit.	> 220g/m ²	Short.	Without.	Set.
9335-1101	Jacket.	> 220g/m ²	Short.	Without.	PC.
9335-2100	Suit.	< 180g/m ²	Short.	Without.	Set.
9335-2101	Jacket.	< 180g/m ²	Short.	Without.	PC.

Please specify color.



Working coverall

*Cotton/polyester cloth.
 *Available weight: Heavy >220g/m², economy light weight <180g/m².
 *Available color: White(WT), red(RD), blue(BE), sky(SY), green(GN), yellow(YW), orange(OE).

Item	Weight of fabric	Sleeves	High vision belt
9332-1000	> 220g/m ² .		Without.
9332-1100	> 220g/m ² .	Short.	Without.
9332-2000	< 180g/m ² .		Without.
9332-2100	< 180g/m ² .	Short.	Without.
9332F-1000	> 220g/m ² .		With.



Working pants

*Cotton/polyester cloth.
 *Available weight: Heavy >220g/m², economy light weight <180g/m².

*Available color: White(WT), red(RD), blue(BE), sky(SY), green(GN), yellow(YW), orange(OE).
9334-1000 > 220g/m².
9334-2000 < 180g/m².